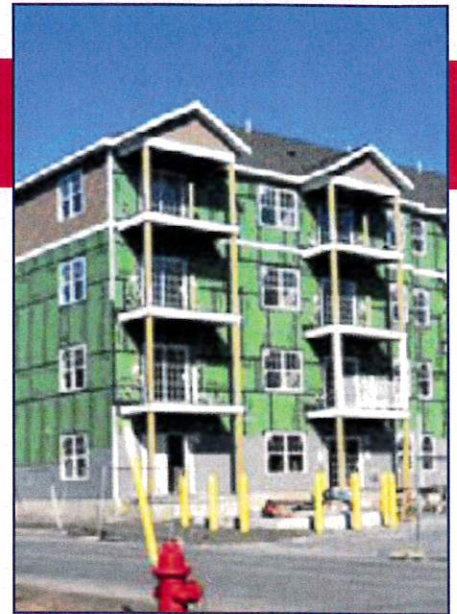


# WHAT YOU NEED TO KNOW ABOUT GOVERNOR HOCHUL'S HIGH DENSITY HOUSING PLAN FOR LONG ISLAND

- Rezones properties within one half mile of a transit station to a minimum of 50 units per acre.
- Prohibits any restrictions on height, property line setbacks, lot coverage or minimum parking space requirements.
- Allows developers to appeal local zoning determinations to a board of bureaucrats appointed by Albany politicians.
- Targets Long Island for increased housing density.
- Prevents local municipalities from considering impacts to traffic, schools, noise, air quality and other environmental impacts.

## IF ENACTED, THE GOVERNOR'S HIGH DENSITY HOUSING PLAN WILL:

- STRESS LONG ISLAND'S FRAGILE SOLE SOURCE AQUIFER FOR DRINKING WATER.
- OVERCROWD OUR SCHOOLS.
- INCREASE TAXES TO PAY FOR MORE STUDENTS IN SCHOOL AND SERVICES DEMANDED BY A LARGER POPULATION.
- INCREASE STRAINS ON CRITICAL INFRASTRUCTURE AND SERVICES FROM SEWAGE TREATMENT TO ROADS TO GAS AND ELECTRIC TO FIRE AND POLICE SERVICES.
- SILENCE YOUR VOICE ON LOCAL ZONING AND DEVELOPMENT. DECISIONS FOR OUR COMMUNITIES WILL BE MADE BY ALBANY BUREAUCRATS



**SAY NO TO  
GOV. HOCHUL'S  
HOUSING PLAN!**  
Sign My Petition By Visiting:  
[www.nassaucountyny.gov/housingpetition](http://www.nassaucountyny.gov/housingpetition)  
Call the Governor's office at:  
**518-474-8390**

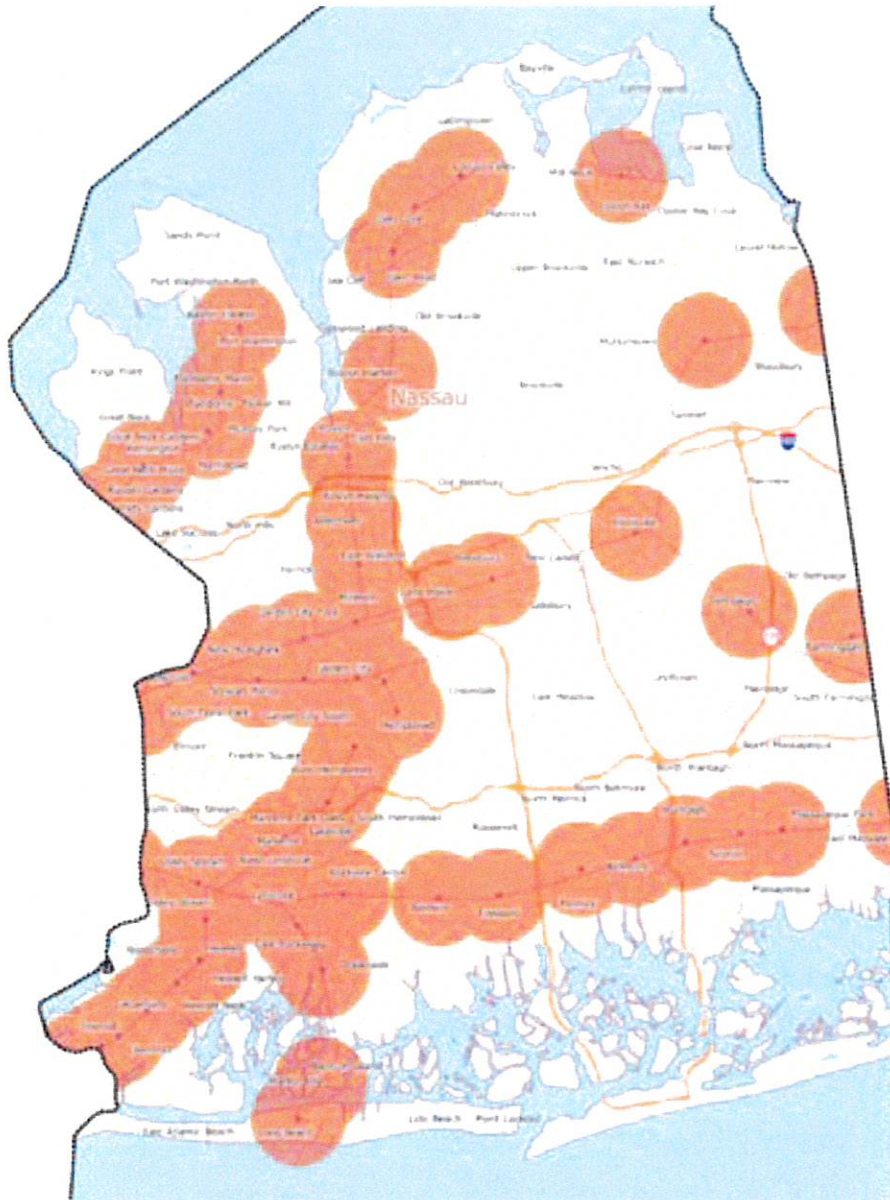


For more information, please contact Presiding Officer Nicoletto's office:  
**phone: 516-571-6209 • email: [rnicoletto@nassaucountyny.gov](mailto:rnicoletto@nassaucountyny.gov)**



PRESIDING OFFICER  
**RICHARD J. NICOLELLO**  
 1550 FRANKLIN AVENUE  
 MINEOLA, NY 11501  
 rnicolello@nassaucountyny.gov  
 516-571-6209

PRSR STD  
 U.S. POSTAGE  
 PAID  
 PERMIT NO. 728  
 HICKSVILLE, NY



WHAT YOU NEED  
 TO KNOW ABOUT  
 GOVERNOR HOCHUL'S  
**High Density  
 Housing Plan  
 for  
 Long Island**

The map to the left shows the areas in which the Governor's Plan would force **high density rezoning** with a minimum of 50 units per acre.